

BLINDS *please.*

Wood Blinds INSIDE MOUNT

For installation, you will need the following tools:

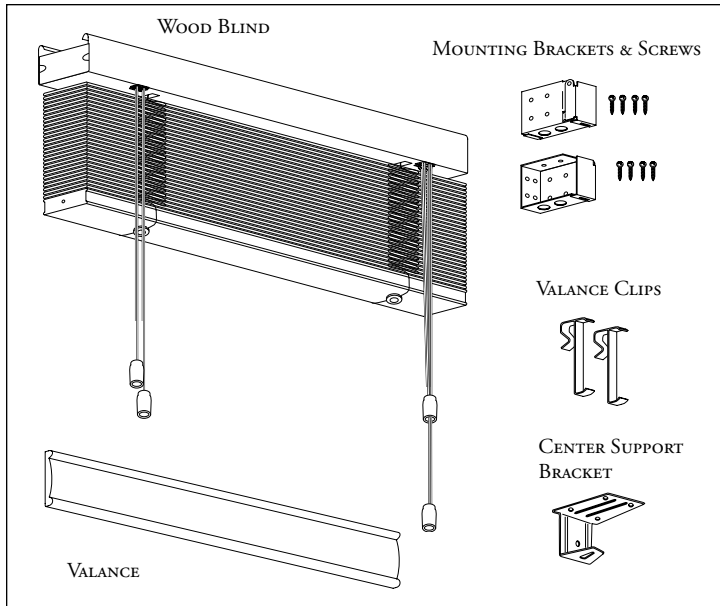
1. Pencil
2. Phillips screwdriver
3. Steel tape measure
4. Drill with 3/32" bit (recommended)

Your Wood blinds come with the following components:

Wood Blind
Valance
Center Support Bracket (see chart below)

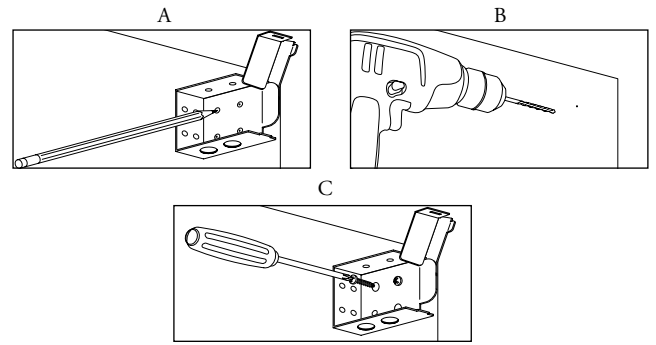
Mounting Brackets & Screws
Valance Clips

Number of Supports	For Widths Over
1	48"
2	96"

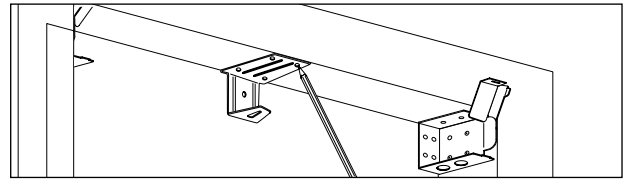


1 The mounting brackets are designed with a series of holes to allow for different mounting conditions and window types. For standard installation the front of the brackets should be flush with the wall and should open from the front with the doors swinging upwards.

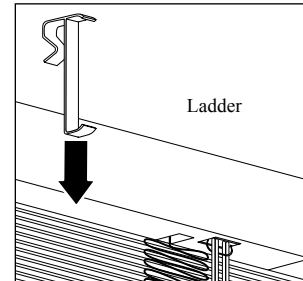
Identify left headrail and right headrail brackets; open.
Note: For flush valance mount, align back of brackets 3" in from front of window frame. A) Hold each bracket in corner of window frame. Mark desired screw holes. B) Drill at each mark. C) Mount brackets with supplied screws.



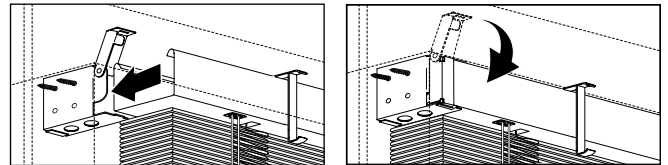
When center support brackets are provided, space support brackets evenly along headrail. Position each bracket so it will not interfere with the mechanisms inside the headrail. Align rear of support bracket with rear of mounting brackets. Mark support bracket screw holes, then drill at marks. Mount support brackets.



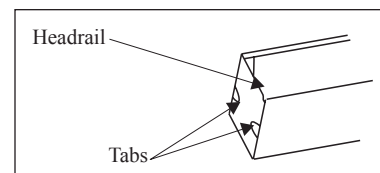
2 Before inserting the blind into its mounting brackets, attach the valance clips to the headrail. Snap the valance clips onto the front of the headrail and space them evenly.



Insert blind into brackets, clipping headrail into center supports (if present). Close mounting bracket doors.

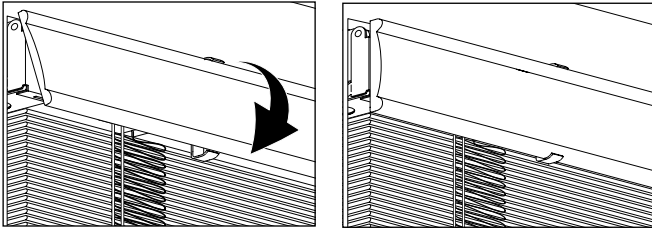


If headrail moves left or right in brackets more than 1/8", bend out tabs on end stiffeners for tighter fit.

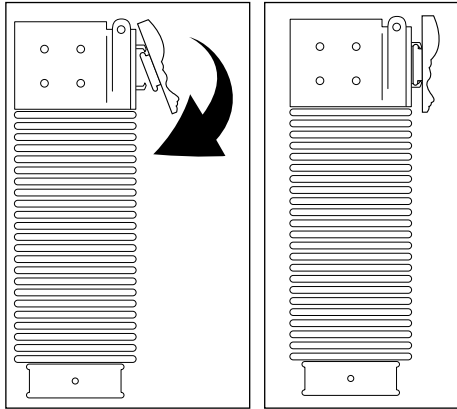


3 Attach valance to valance clips by inserting the top edge first, then press bottom edge into place.

Standard Valance



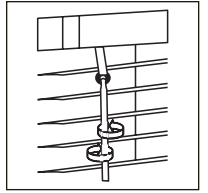
Crown Valance



OPERATING INSTRUCTIONS

Optional Wand Tilt

Turn wand to tilt slats to desired angle.



Cord Tilt

Pull cord down on left to close slats.

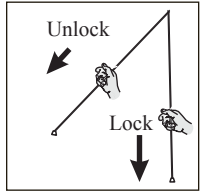
Pull cord down on right to open slats.

Lift Control

Pull lift cords to center of blind to lower.

Pull straight down on lift cords to raise.

Note: Keep slats fully open (not tilted) while raising or lowering.



PROPER CARE OF WOOD BLINDS

Wood blind slats are affected by moisture. High humidity environments can cause slat warping, as can direct contact with water. Slight twisting and curving of slats is considered normal wear and tear. Clean with a soft dry cloth. Furniture polish can be used on stained (not painted) surfaces. Please be sure to spray the cloth, not the blind.

BLINDS *please.*

Wood Blinds OUTSIDE MOUNT

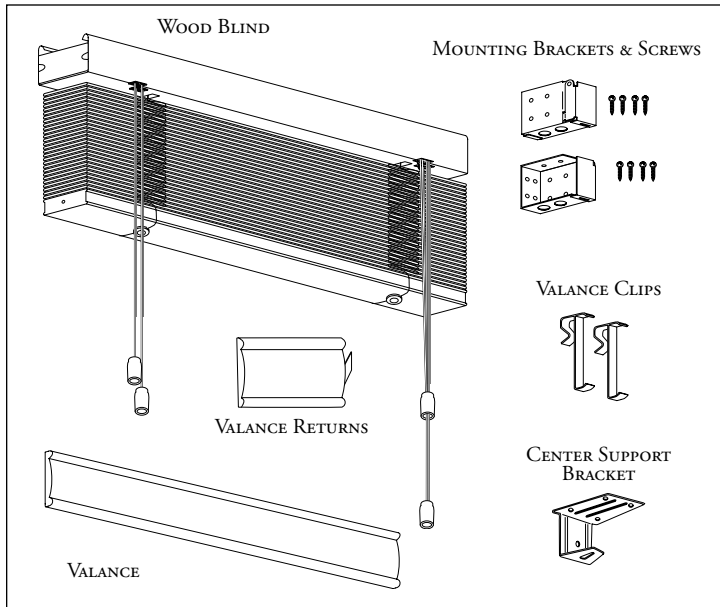
For installation, you will need the following tools:

1. Pencil
2. Phillips screwdriver
3. Steel tape measure
4. Drill with 3/32" bit (recommended)

Your Wood blinds come with the following components:

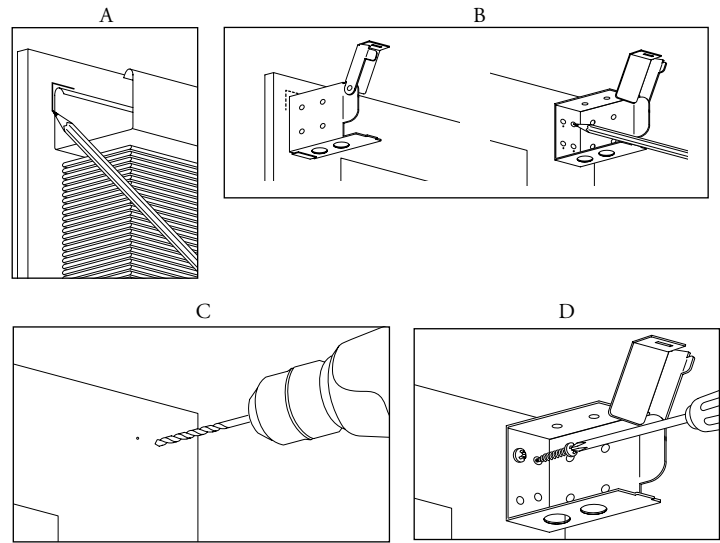
- | | |
|--|----------------------------|
| Wood Blind | Mounting Brackets & Screws |
| Valance | Valance Clips |
| Valance Returns | |
| Center Support Bracket (see chart below) | |

Number of Supports	For Widths Over
1	48"
2	96"

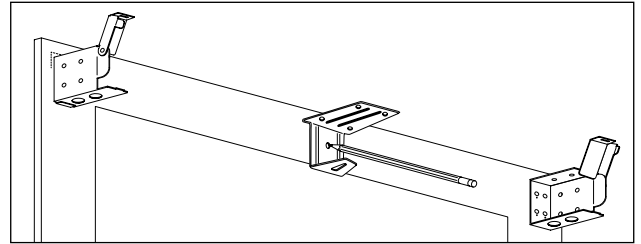


1 The mounting brackets are designed with a series of holes to allow for different mounting conditions and window types. For standard installation the brackets should be placed at least 1 1/2" above the window opening.

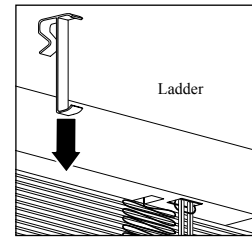
A) Center headrail over window and mark corner at each end, ensuring blind is level. B) Identify right headrail and left headrail brackets; open. Then align to marks made in step A. Mark screw holes. C) Drill holes. D) Mount brackets with supplied screws.



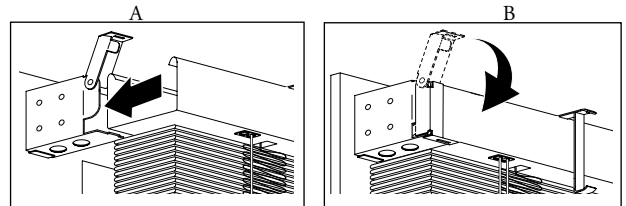
When center support brackets are provided, space support brackets evenly along headrail. Position each bracket so it will not interfere with mechanisms inside the headrail. Align top of support bracket with tops of mounting brackets. Mark support bracket screw holes, then drill at marks. Mount support brackets.



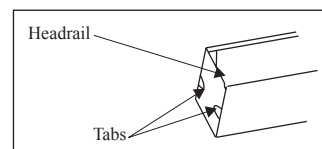
2 Before inserting the blind into its mounting brackets, attach the valance clips to the headrail. Snap the valance clips onto the front of the headrail and space them evenly.



A) Insert blind into brackets, clipping the headrail into center supports (if present). B) Close mounting bracket doors.

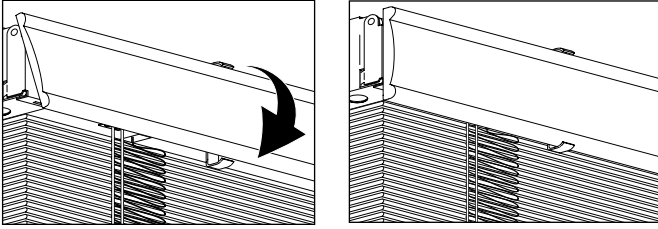


If headrail moves left or right in brackets more than 1/8", bend out tabs on end stiffeners for tighter fit.

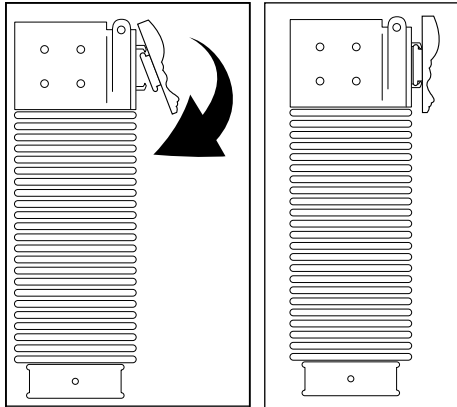


3 Attach valance to valance clips by inserting the top edge first, then press bottom edge into place.

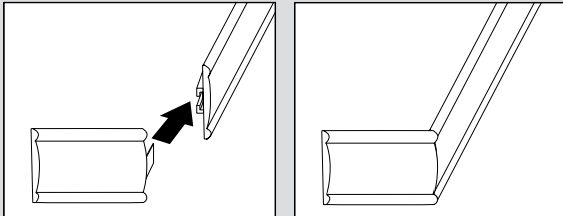
Standard Valance



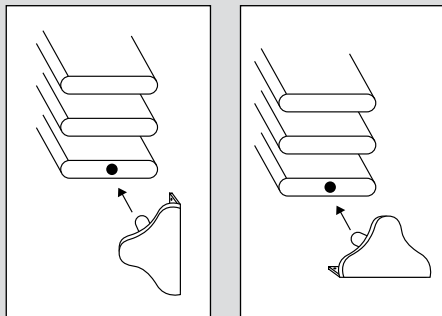
Crown Valance



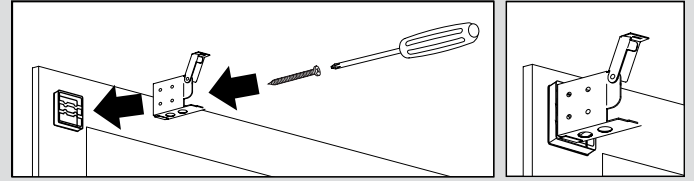
4 **OPTIONAL VALANCE RETURNS**
Insert metal return bracket (on valance return), into the slot on the back of the valance.



5 **OPTIONAL HOLD DOWN BRACKETS**
Insert half of the hold down bracket's pin into bottomrail end plug; repeat for other end. Mark location of hold down brackets. Move bottomrail out of the way and screw the brackets to the mounting surface. Insert one end of the bottomrail into one hold down bracket, then insert other end.



6 **OPTIONAL BRACKET SPACERS**
Insert screws through holes of mounting bracket and bracket spacer, aligning the mounting bracket with the bracket spacer. Make sure screws align with the hole marked/drilled in the wall, and secure.



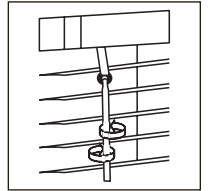
OPERATING INSTRUCTIONS

Optional Wand Tilt

Turn wand to tilt slats to desired angle.

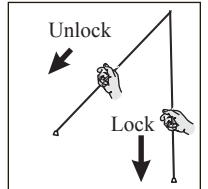
Cord Tilt

Pull cord down on left to close slats.
Pull cord down on right to open slats.



Lift Control

Pull lift cords to center of blind to lower.
Pull straight down on lift cords to raise.
Note: Keep slats fully open (not tilted) while raising or lowering



PROPER CARE OF WOOD BLINDS

Wood blind slats are affected by moisture. High humidity environments can cause slat warping, as can direct contact with water. Slight twisting and curving of slats is considered normal wear and tear. Clean with a soft dry cloth. Furniture polish can be used on stained (not painted) surfaces. Please be sure to spray the cloth, not the blind.