

BLINDS *please.*

Aluminum Blinds INSIDE MOUNT

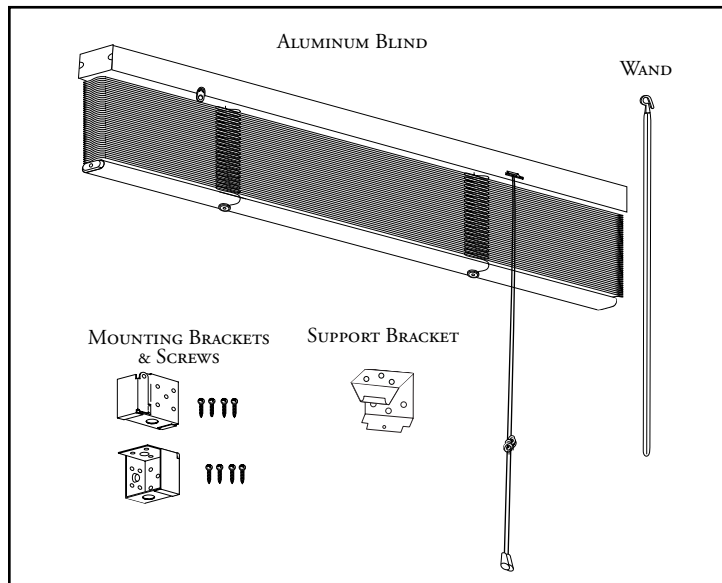
For installation, you will need the following tools:

1. Pencil
2. Phillips screwdriver
3. Steel tape measure
4. Drill with 3/32" bit (recommended)

Your Aluminum blinds come with the following components:

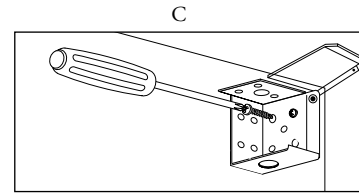
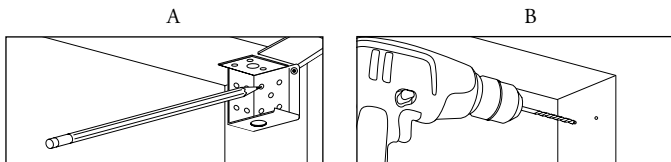
Aluminum Blind Mounting Brackets & Screws
Wand Support Brackets (see chart below)

Number of Supports	For Widths Over
1	48"
2	96"
3	144"

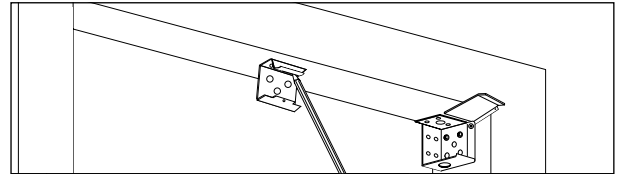


1 The mounting brackets are designed with a series of holes to allow for different mounting conditions and window types. For standard installation the front of the brackets should be flush with the wall and should open from the front with the doors swinging upwards.

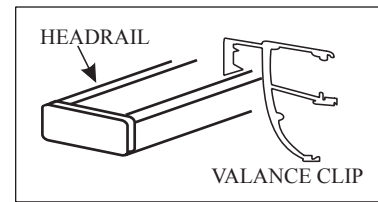
Identify left headrail and right headrail brackets; open.
Note: For flush valance mount, align brackets 1 7/8" in from wall face. A) Hold each bracket in corner of window frame. Mark desired screw holes. B) Drill at each mark. C) Mount brackets with supplied screws.



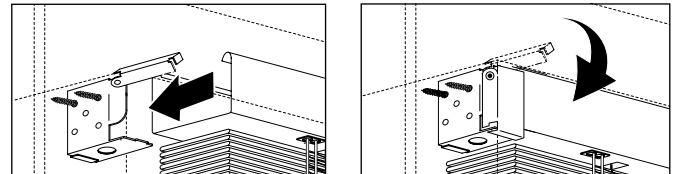
When center support brackets are provided, space support brackets evenly along headrail. Position each bracket so it will not interfere with the mechanisms inside the headrail. Align rear of support bracket with rear of mounting brackets. Mark support bracket screw holes, then drill at marks and mount the support bracket.



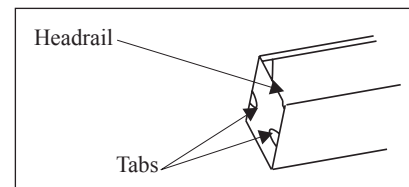
2 Before inserting the blind into its mounting brackets, attach the valance clips to the headrail. Snap the valance clips onto the front of the headrail and space them evenly.



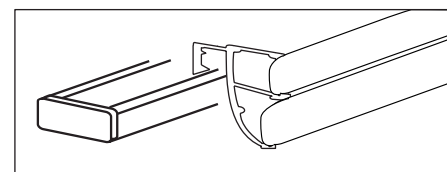
Insert blind into brackets, clipping headrail into center supports (if present). Close mounting bracket doors.



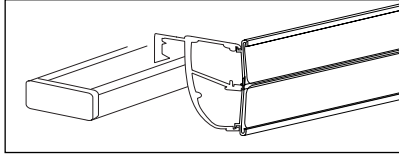
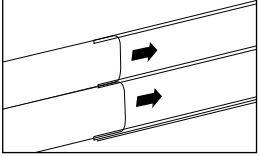
If headrail moves left or right in brackets more than 1/8", bend out tabs on end stiffeners for tighter fit.



3 **FOR STANDARD ALUMINUM BLINDS:** Insert slats into the valance clips by inserting the top edge first and then pressing the bottom edge into place.



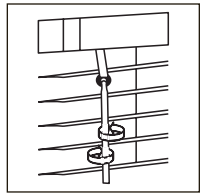
FOR HEAVY DUTY ALUMINUM BLINDS: Insert slats into the deluxe channel valance. Clip deluxe channel valance to valance clips on headrail.



OPERATING INSTRUCTIONS

Wand Tilt

Turn wand to tilt slats to desired angle.

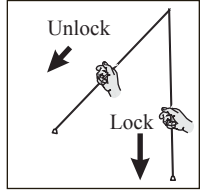


Lift Control

Pull lift cords to center of blind to lower.

Pull straight down on lift cords to raise.

Note: Keep slats fully open (not tilted) while raising or lowering.



PROPER CARE OF ALUMINUM BLINDS

Clean slats with a damp cloth.

BLINDS *please.*

Aluminum Blinds OUTSIDE MOUNT

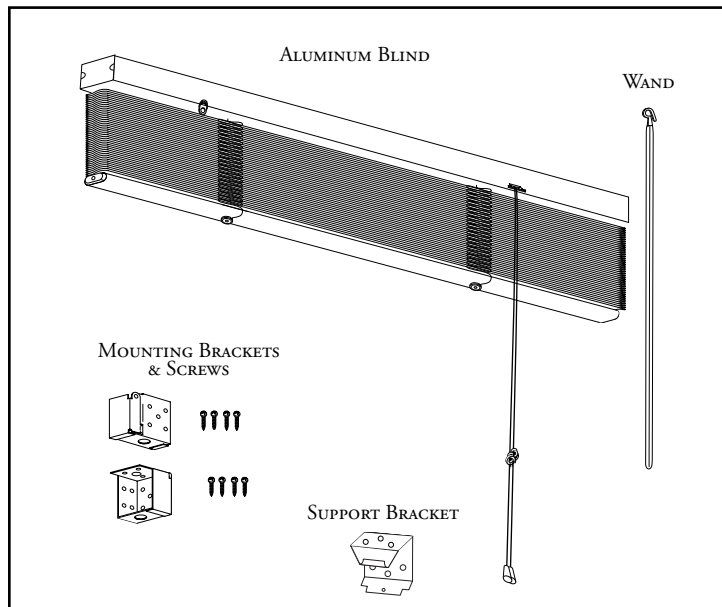
For installation, you will need the following tools:

1. Pencil
2. Phillips screwdriver
3. Steel tape measure
4. Drill with 3/32" bit (recommended)

Your Aluminum blinds come with the following components:

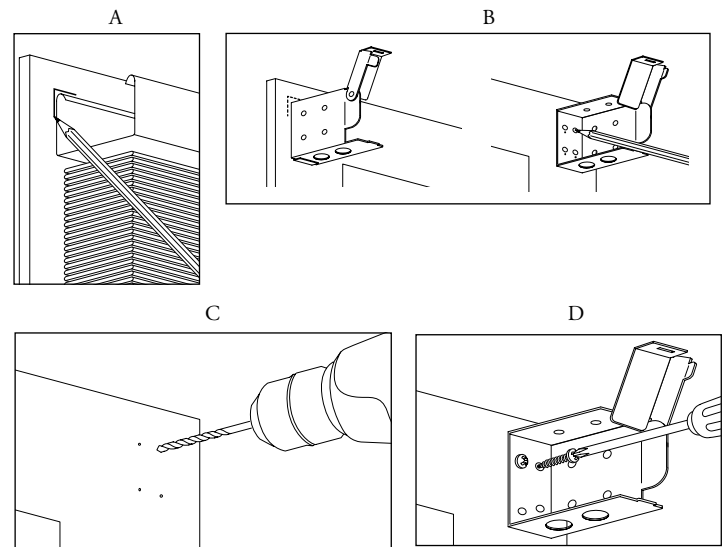
- Aluminum Blind
- Wand
- Mounting Brackets & Screws
- Support Brackets (see chart below)

Number of Supports	For Widths Over
1	48"
2	96"
3	144"

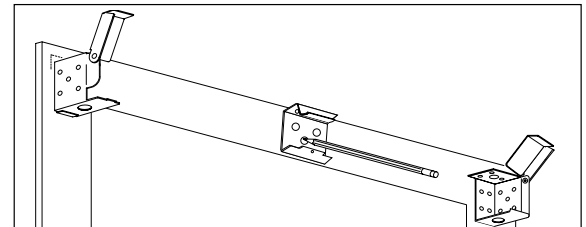


1 The mounting brackets are designed with a series of holes to allow for different mounting conditions and window types. For standard installation the brackets should be placed at least 1 1/2" above the window opening. *If bracket spacers are being used, please see optional instructions on the back of this page.

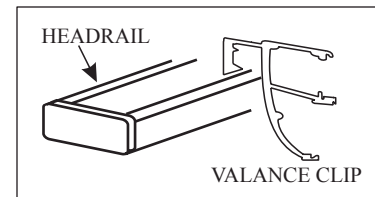
A) Center headrail over window and mark corner at each end, ensuring blind is level. B) Identify right headrail and left headrail brackets; open. Then align to marks made in step A. Mark screw holes. C) Drill holes. D) Mount brackets with supplied screws.



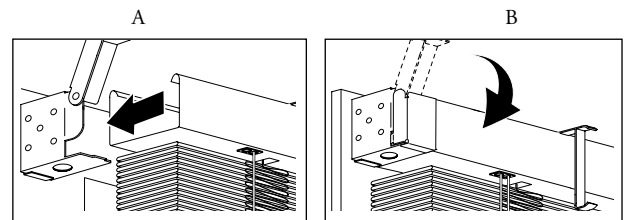
When center support brackets are provided, space support brackets evenly along headrail. Position each bracket so it will not interfere with mechanisms inside the headrail. Align top of support bracket with tops of mounting brackets. Mark support bracket screw holes, then drill at marks. Mount support brackets.



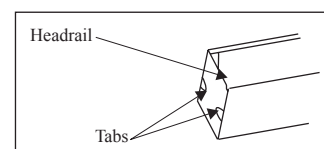
2 Before inserting the blind into its mounting brackets, attach the valance clips to the headrail. Snap the valance clips onto the front of the headrail and space them evenly.



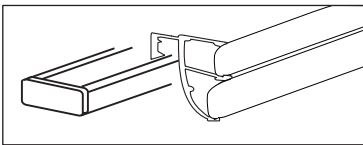
A) Insert blind into brackets, clipping the headrail into center supports (if present). B) Close mounting bracket doors.



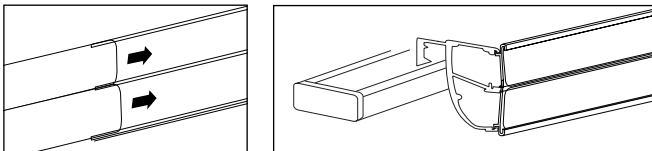
If headrail moves left or right in brackets more than 1/8", bend out tabs on end stiffeners for tighter fit.



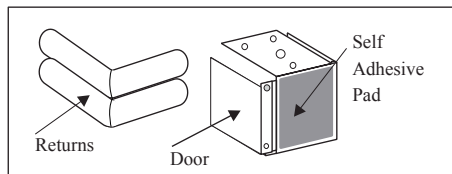
3 **FOR STANDARD ALUMINUM BLINDS:** Insert slats into the valance clips by inserting the top edge first and then pressing the bottom edge into place.



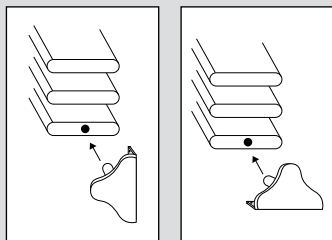
FOR HEAVY DUTY ALUMINUM BLINDS: Insert slats into the deluxe channel valance. Clip deluxe channel valance to valance clips on headrail.



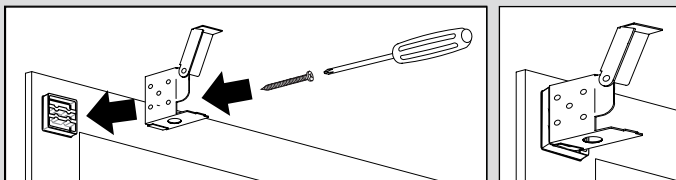
To make the valance returns, hold the return slats up to the side of the blind and mark the desired length (this is where you will bend the slats). Mark remaining slat accordingly. Place the slats face down with a ruler or straight edge on the marks. Hold the straight edge and bend the slats. Stick the self-adhesive pad onto the end of the blind's mounting bracket. Then place each slat of the return onto the pad, aligning them with the valance.



4 **OPTIONAL HOLD DOWN BRACKETS**
Insert half of the hold down bracket's pin into bottomrail end plug; repeat for other end. Mark location of hold down brackets. Move bottomrail out of the way and screw the brackets to the mounting surface. Insert one end of the bottomrail into one hold down bracket, then insert other end.



5 **OPTIONAL BRACKET SPACERS**
Insert screws through holes of mounting bracket and bracket spacer, aligning the mounting bracket with the bracket spacer. Make sure screws align with the hole marked/drilled in the wall, and secure.



OPERATING INSTRUCTIONS

Wand Tilt

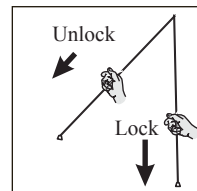
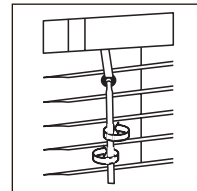
Turn wand to tilt slats to desired angle

Lift Control

The locking mechanism is a sliding rod type. It will lock automatically when cord is released, preventing blind from crashing down to full length.

To lower, pull cords toward center of blind and hold in this position while lowering.

Note: Keep slats fully open (not tilted) while raising or lowering.



PROPER CARE OF ALUMINUM BLINDS

Clean slats with a damp cloth.